

# *R&E*

*Issue 1: R&E Board Appointments*  
*Issue 2: Cycle 2 Project Approvals*  
*Issue 3: STEP Legislative Report*



*August 2, 2019*  
*Exhibit C*



# Sources of R&E Funding

## Surcharges and fees:

- Resident annual angling license: \$4
- Ocean troll (salmon) permit: \$65
- Col. R. gillnet (salmon) permit: \$74
- Commercial poundage fee: \$0.05

## Estimated Revenue (approximate)

Commercial landing fee - 5%	\$200,000
Commercial permits - 5%	\$200,000
Recreational license - 90%	\$4,100,000
<b>REVENUES TOTAL</b>	<b>\$4,500,000</b>

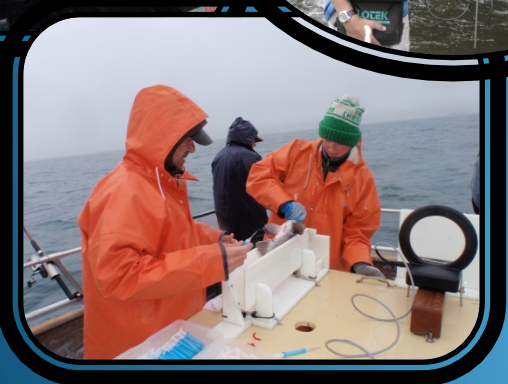
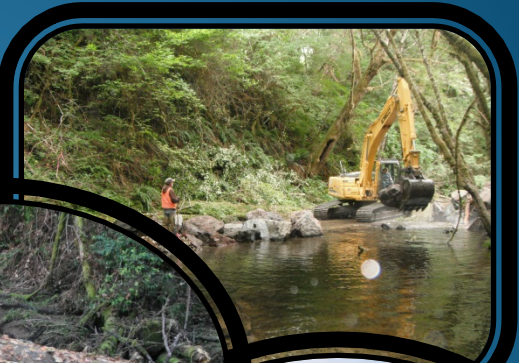


Sport and Commercial Spent in Proportion to Revenue

# Types of projects funded by R&E

## Aquatic Inventories

## Fish Habitat



TO

# Types of projects funded by R&E

## Public Education

## Angler Access



# Types of projects funded by R&E

## Fish Passage



## Fish Screening



# Types of projects funded by R&E

## Liberation Equipment

## Hatchery Restoration and Improvements



TO



TO



## RESTORATION of Facilities

## ENHANCEMENT of Fisheries

Liberation Equipment

Hatchery Repair and  
Maintenance

Repair Fish Passage  
and Screens

New Hatchery  
Equipment

New Passage, Screens,  
& Habitat Improvement

Fishing Access and  
Public Education

Research and  
Monitoring

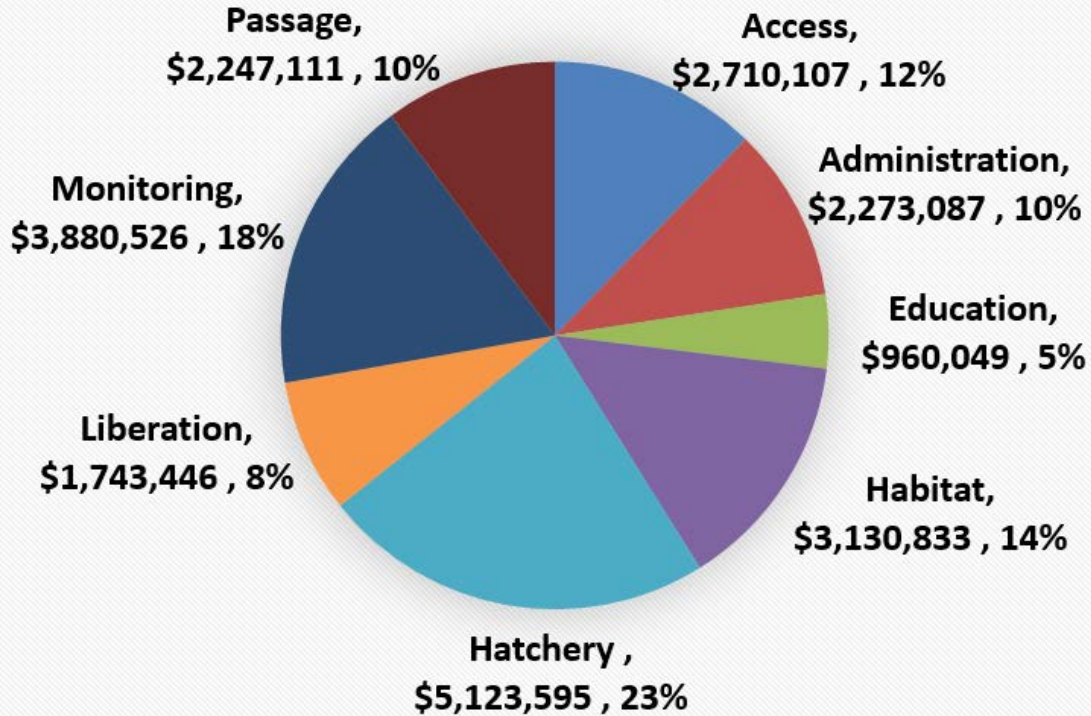
R&E Board Recommends a Balance

### R&E Board

- 1 - Public-At-Large
- 3 - Commercial
- 3 - Sport

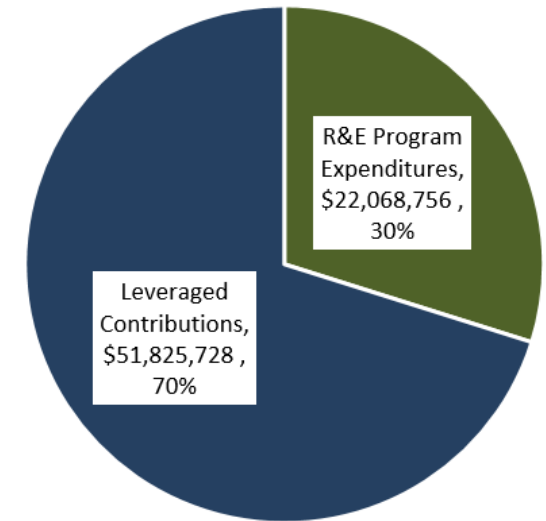


## Percent Awarded by Project Type 07-17



2007-2017 R&E - \$22.1 Million

## Total cost of projects with R&E funding



On \$73.9 Million  
in projects

# Issue 1: R&E Board Appointments



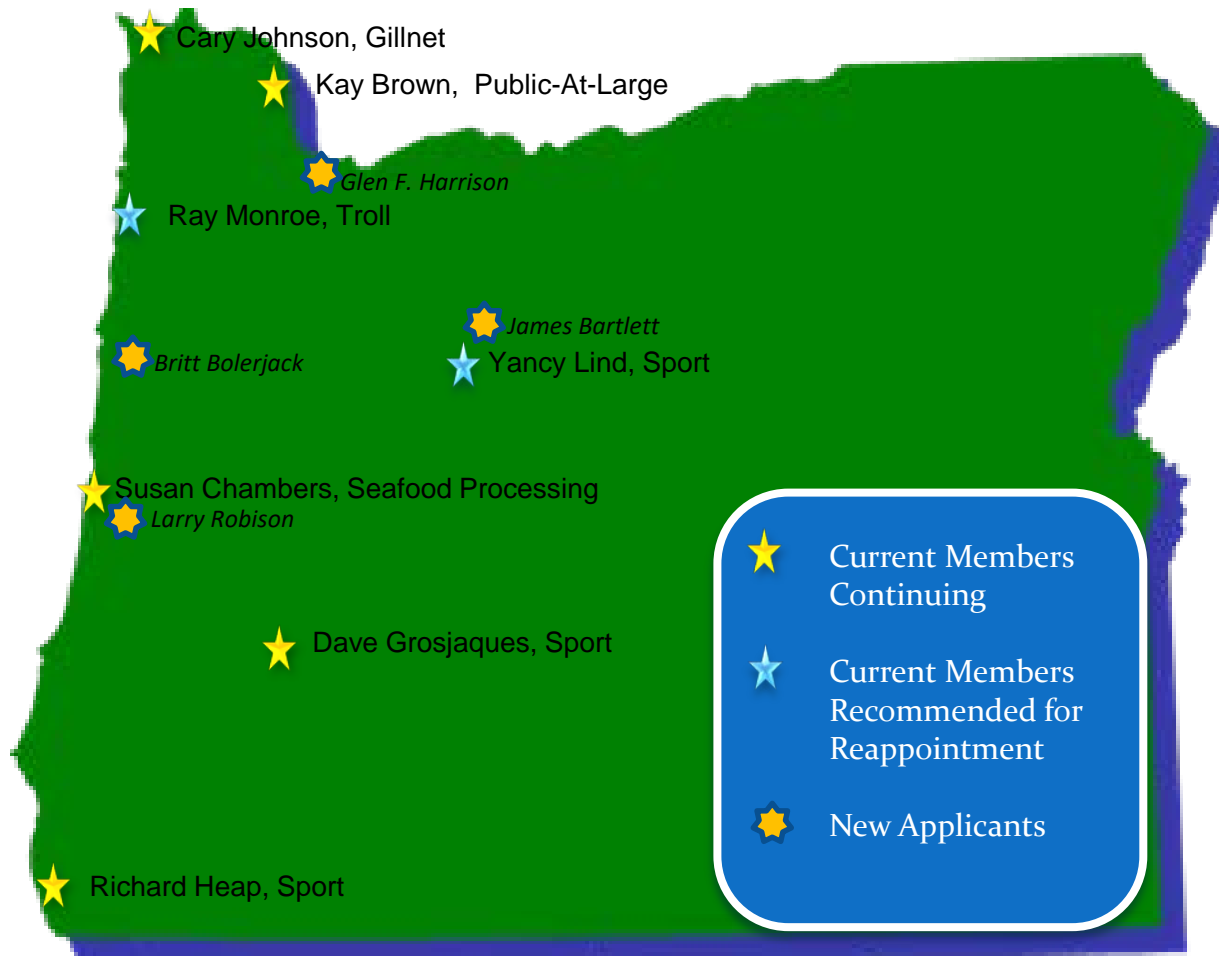
## R&E Board Positions:

Name	Position	Term
Cary Johnson	Gill Net	2 <sup>nd</sup> ends 12/2022
Ray Monroe	Troll	1 <sup>st</sup> ends 9/2019
Susan Chambers	Seafood Processing	1 <sup>st</sup> ends 12/2021
Kay Brown	Public-At-Large	1 <sup>st</sup> ends 12/2020
Richard Heap	Sport Fishing	2 <sup>nd</sup> ends 12/2022
Yancy Lind	Sport Fishing	1 <sup>st</sup> ends 10/2019
Dave Grosjacques	Sport Fishing	1 <sup>st</sup> ends 12/2021

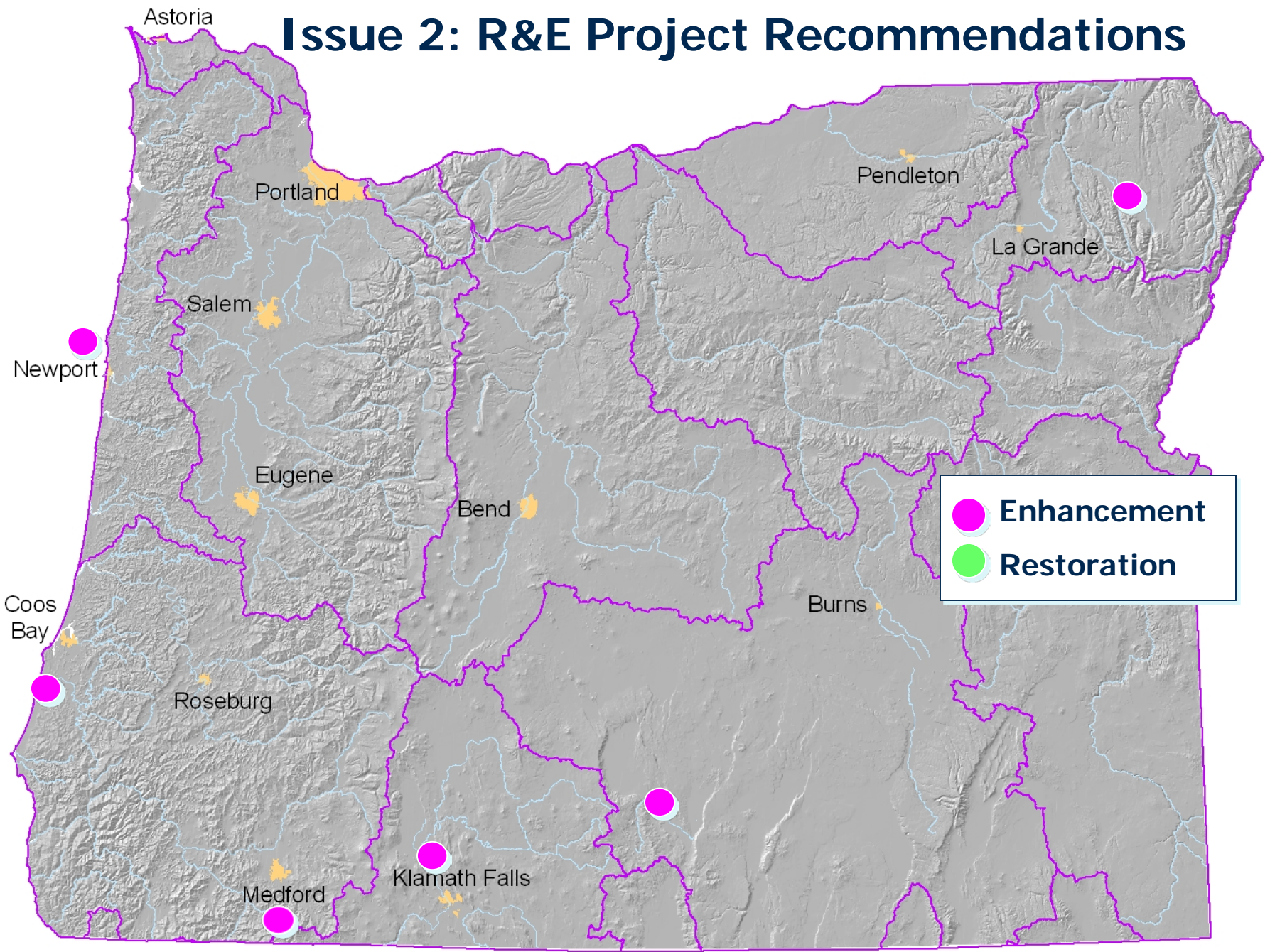
# R&E Board Selection Criteria

- Familiarity with fish management issues
- Availability for and approach to group decision-making
- Experience working with or representing the public
- Interaction with ODFW and Commission
- Collaborative approach to decision making
- Fishing background
- Participation in fishing organizations
- Location

# Applicants, Recommendations, and Existing R&E Board Members



# Issue 2: R&E Project Recommendations

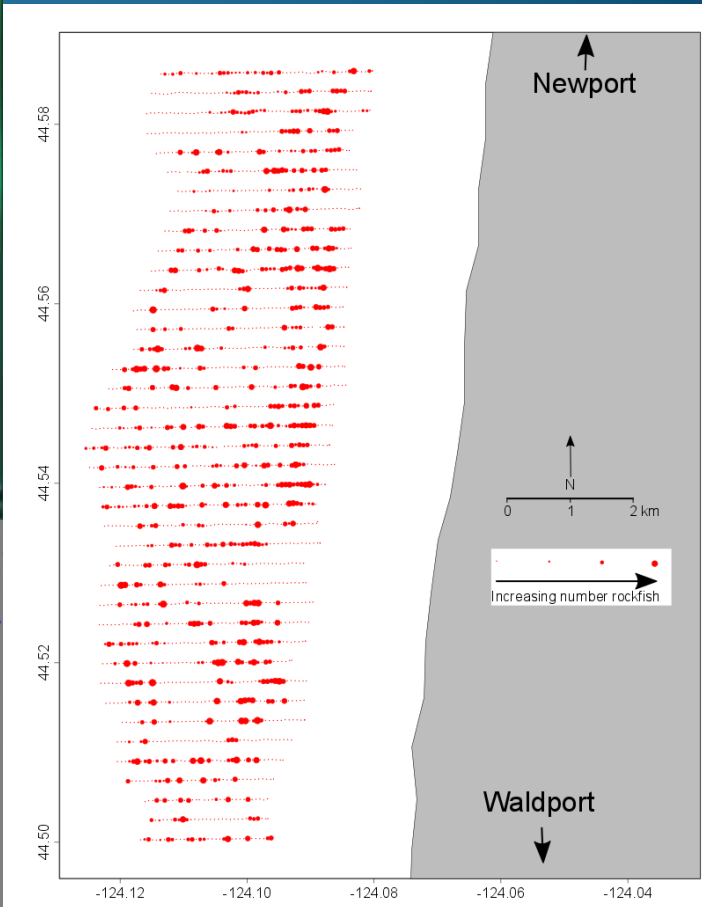
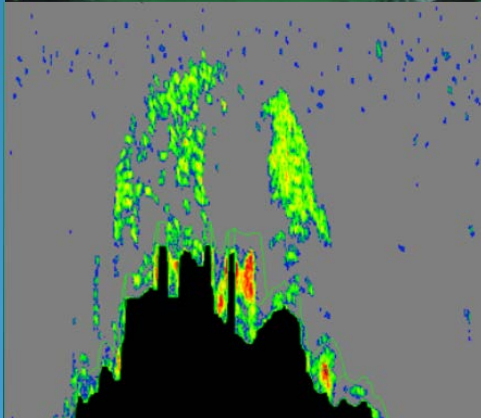
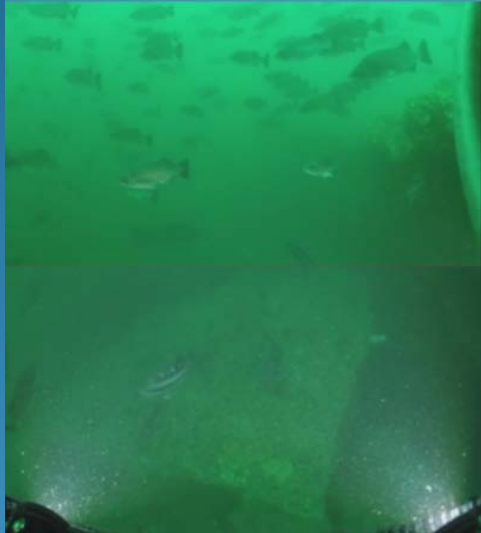
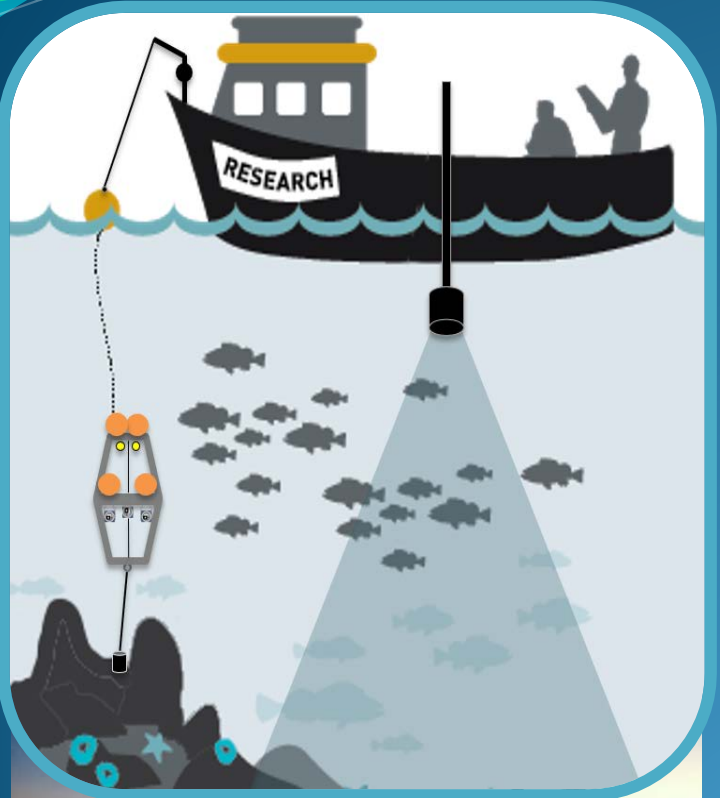


# Recommended Projects

Project Number	Project Name	Activity Type	S/C	Cycle 19-2	Vote
19-013	ODFW Angler Access Improvements Phase 3	Angler Access	S	\$270,000	6Y-1N
19-014	Upper Phillips Dam Passage & Ditch Efficiency	Fish Passage	S	\$48,816	6Y-1N
19-016	Port of Bandon ADA Fishing Pier	Angler Access	S	\$150,000	5Y-2N
19-017	Genetic Assessment of Klamath Redband Trout	Monitoring	S	\$33,830	5Y-2N
19-018	Chewaucan River Fish Screening Upgrades	Screening	S	\$15,000	6Y-1N
19-021	Surveying Oregon's Nearshore Semi-Pelagic Rockfish	Monitoring	S/C	\$250,000	5Y-1N-1A
<b>TOTAL</b>				<b>\$767,646</b>	



# Surveying Oregon's Nearshore Semi-Pelagic Rockfish



# R&E Budget Status

## 2019-2021 Biennium

	Cycle 2 Recommendation	Limitation	Previously Approved Projects	Remaining if Approved
Restoration	\$15,000	≈50%	\$2,564,285	
Enhancement	\$752,646	≈50%	\$1,386,481	
<b>TOTAL</b>	<b>\$767,646</b>	<b>\$5,249,791</b>	<b>\$3,950,766</b>	<b>\$531,379</b>

# Staff Recommendation:

Approve R&E Board recommendations.



# Issue 3: 2018 Annual Progress Report

## Oregon Department of Fish and Wildlife

### Salmon and Trout Enhancement Program



**8/2/2019 Summary for  
ODFW Commission**



**Tom VanderPlaat - STAC**

**Kevin Herkamp - ODFW STEP/RE Coordinator**

# STAC = Agency Advisors



## WHO IS STAC?

13 members from across state

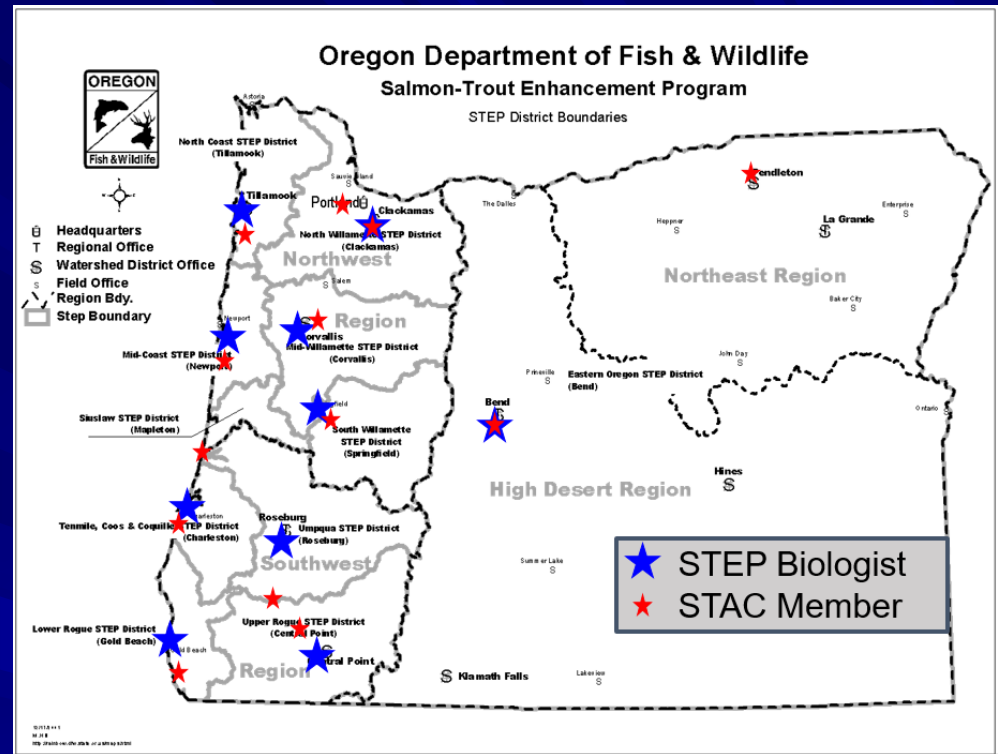
Appointed by Governor

Represent STEP Volunteers

## WHAT IS STAC'S ROLE?

Review ODFW policies and make recommendations to ODFW & Commission concerning the implementation of STEP.

Provide a consolidated voice of the volunteers and anglers to biologists and management.

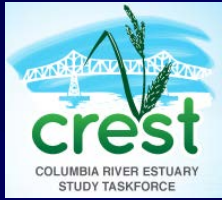


# STEP = Volunteers In Fish Management



# STEP = Partnerships

And Hundreds More



# STEP = Volunteers

## 2018

Volunteers provided the equivalent of  $\approx 39$  full-time employees!

Value of this time is \$2.8 million

Project Type	Hours	FTE
Education/Outreach	16,100	$\approx 8$
Fishing Access	1,500	$\approx 1$
Habitat Enhancement	3,700	$\approx 2$
Inventory and Monitoring	8,100	$\approx 4$
Raising Fish (Hatcheries)	50,200	$\approx 24$
<b>Total</b>	<b>79,600</b>	<b>39</b>

Supported by 10 STEP Biologists

# STEP = Teaching our kids



## Classroom

### Fish Eggs to Fry

33,000+ participants  
820+ Classrooms



## Field

### Aquatic Education



## Fishing

### Angling Education

**66,300+ participants!**

1,200 projects

16,000 hrs. donated

# STEP = A place to fish and a fish to catch



Fish Stocking



Fishing Access



Volunteer Hatcheries

**3,400 volunteers**

**51,800 hours**

Backpack stocking high lakes and for reintroduction efforts

Docks and angler access projects

STEP involved in 60-80% of coastal fall Chinook releases

# STEP = Where & How Fish Live



**MONITORING** 8,000 hours on 95 projects!

- Spawning surveys & fish sampling
- Creel surveys
- Water quality, temperature, macroinvertebrate



**HABITAT** 3,700 hours on 110 projects!

- Tree planting and stream restoration
- Carcass placement
- Invasive removal and stream clean up



Volunteers provide “staff” when ODFW can’t afford it.



Maintaining long term data sets and finding out new things.

# STEP's Return on Investment

ODFW Contribution	Volunteer Return	Rate of Return
\$1.6 million	\$2.8 million in time	175%
10.5 FTE	39 FTE	390%



## STEP's Work

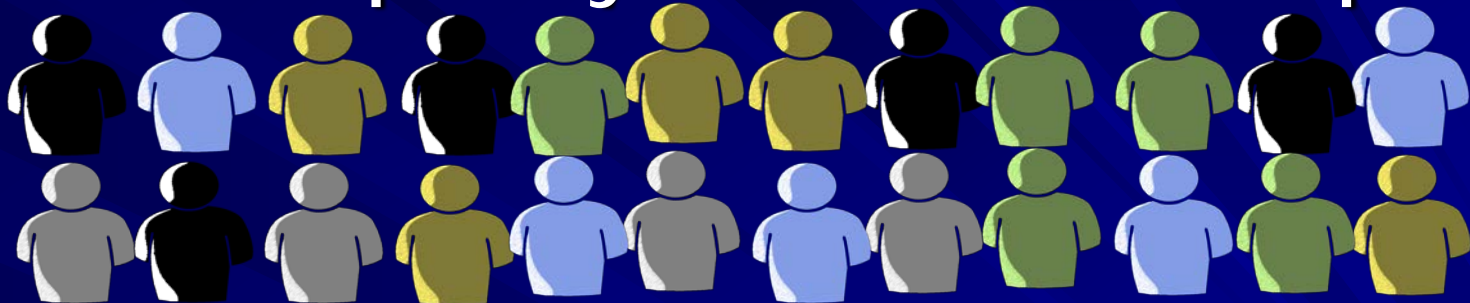
- Angler Recruitment
- Data Collection
- Education
- More Fish
- Engaged Public



## Soft Returns

- Increased Revenue
- Better Management
- Informed Public
- More Anglers & Opportunity
- Support for Agency & Fish

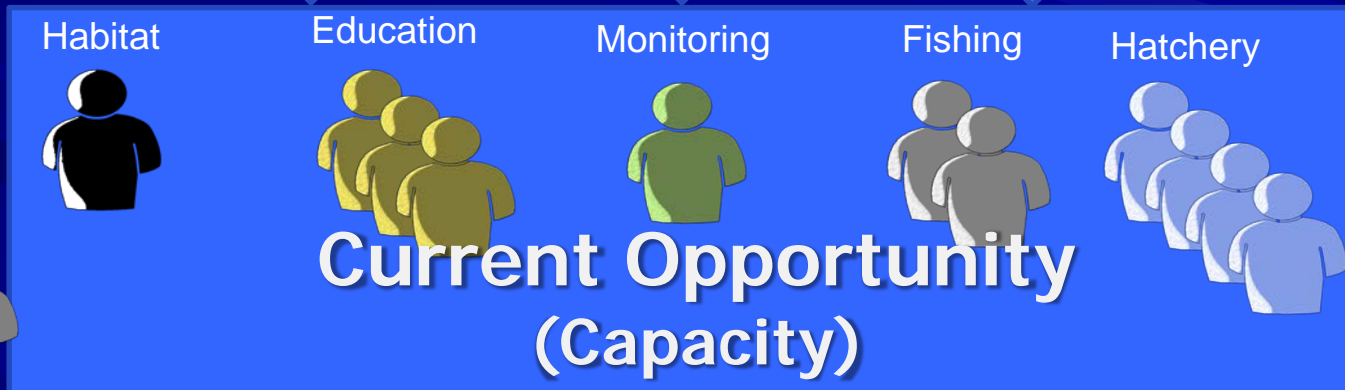
# Increase capacity to increase impact!



Potential Volunteers



STEP Staff



Habitat

Education

Monitoring

Fishing

Hatchery

Current Opportunity  
(Capacity)

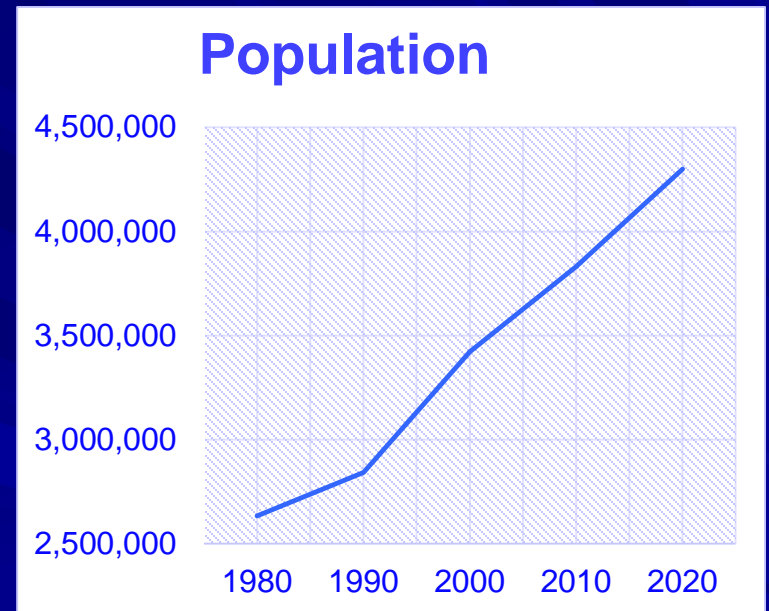


# Challenges

## ■ Build Capacity

- Reduce current constraints in STEP biologist capacity.

Year	Population	STEP Staff	Vol FTE (avg)	Projects
1981	2.6M	5	20 estimate	600
1990	2.8M	10	40	800
2000	3.4M	12	50	1400
2010	3.8M	11	55	1300
2018	4.2M	10.5	50	1300



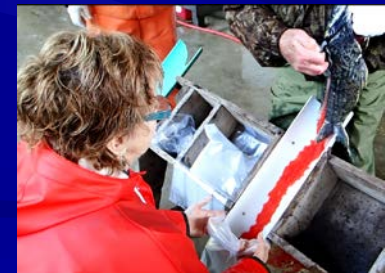
# Challenges

## ■ Proactive Volunteer Management

- To compete for volunteers time, we must:
  - **“Make ODFW the best place to volunteer.”**
  - Provide meaningful opportunities.



- Dedicate resources to update, expand and promote opportunities and programs while maintaining our current efforts.



- Diversify opportunities to recruit from all Oregonians.

# Why address these challenges?

## **STEP is the best deal on the planet!**

Recruiting and educating the public.

Encouraging an informed and involved public.

Improving fishing access and opportunities.

Collecting data and improving resources when ODFW can't.

**STEP focuses on people while other ODFW programs focus on the resource.**

# STAC Needs the Commissions Help:

- **Our volunteer base continues to age and a gap exists between what we can do and could/should do.**
  - We need your support to provide marketing, staffing, and other resources to engage the public and attract, grow, and retain our volunteer base.
  - As budget strategy discussions occur, include STAC with a “seat at the table”.
- **Volunteer Management System & Policies**
  - With the roll out over the next couple years, we need your help to ensure it is done thoughtfully and strategically without alienating our current volunteer base.



# STAC Needs the Commissions Help:

*Additional STEP resources are necessary to secure a bright future for Oregon's fish and fisheries!*

